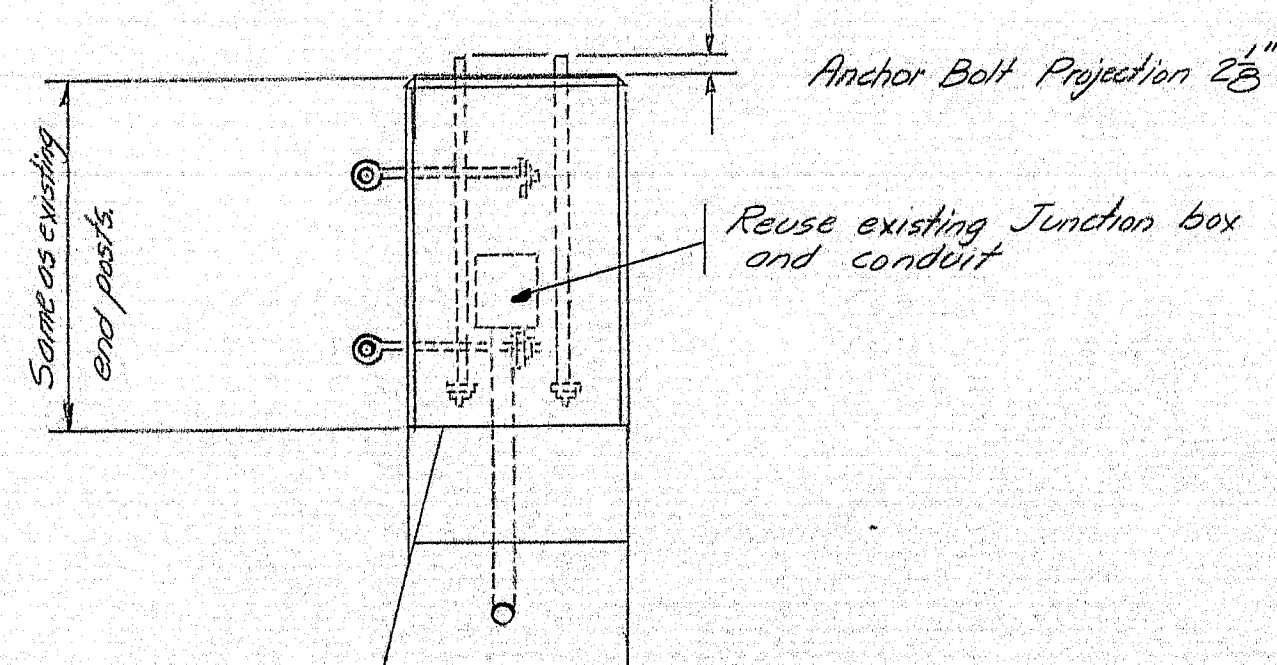
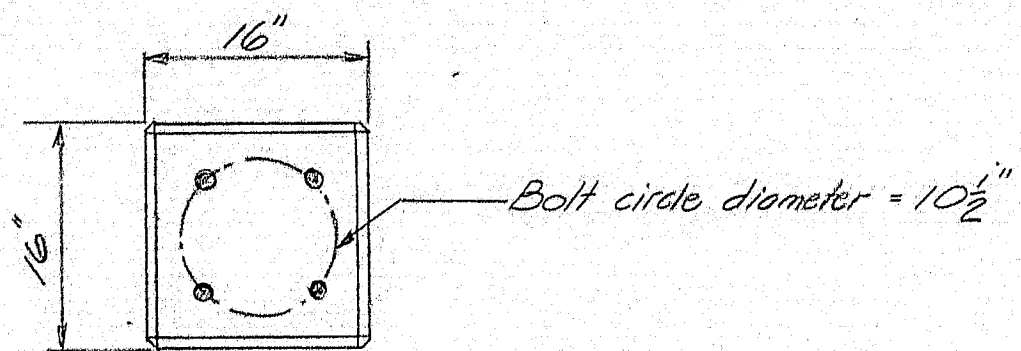


LIGHT STANDARD
2'-Required



CONCRETE POST

MATERIAL

LIGHT STANDARD
Union Metal Co. Catalog LS-29, Design No. 900-Y24. Steel anchor base light standard. 20'-0" mounting height, 6'-0" davit span. Bottom shaft diameter 7.5", 11 legs. Bolt circle diameter 10 1/2", 1 1/2" slip-fitter. 4 anchor bolts. Identified to 900-Y24 except 20'-0" mounting height.

LUMINAIRE
Westinghouse 1375-057 (Reflector), 890 D 238 G 12 (Head) or equal. Side mounted filament luminaire for Type II distribution. Automatic later, 1 1/2" slip-fitter, multiple mogul pullout socket, T" light center. Complete with aluminum head and optical assembly for 4000 lumen lamp. **2-REQUIRED**

LBMP
Group replacement lamp, 275 Watts, 4000 lumens (nominal). Mogul base, clear bulb. P5-35, 120 Volts. G-9 filament, T" light center. **12-REQUIRED**

WIRE
2 conductor #10 AWG, round Simplex-Anhydrex Neoprene, 600 volt non-leaded U.G. cable or equal. **150 linear feet - REQUIRED**

DESIGN- TRACE- CHECK-	MURRELL	BRIDGE NO. 2789
STATE HIGHWAY COMMISSION BRIDGE DIVISION		SURVEY- PLOT-
SOUTHPORT BRIDGE		
OVER		
TOWNSEND GUT		
BETWEEN THE TOWNS OF		
SOUTHPORT & BOOTHBAY HARBOR		
LINCOLN COUNTY		
APPROACH LIGHTS		
SHEET 1 OF 1	AUGUSTA, MAINE	MARCH 1965

